

# PLAY CF

## EXPLODED DRAWING



### HEADSET DIMENSIONS

TOP: ZS 42

BOTTOM: ZS 52

### SHOCK INSTALLATION LENGTH

190 X 51 MM

### SHOCK HARDWARE

FRONT: Ø 8 X 15,75 MM

REAR: Ø 8 X 15,75 MM

### SEATPOST DIAMETER

30,9 MM

### SEATPOSTCLAMP INNER DIAMETER

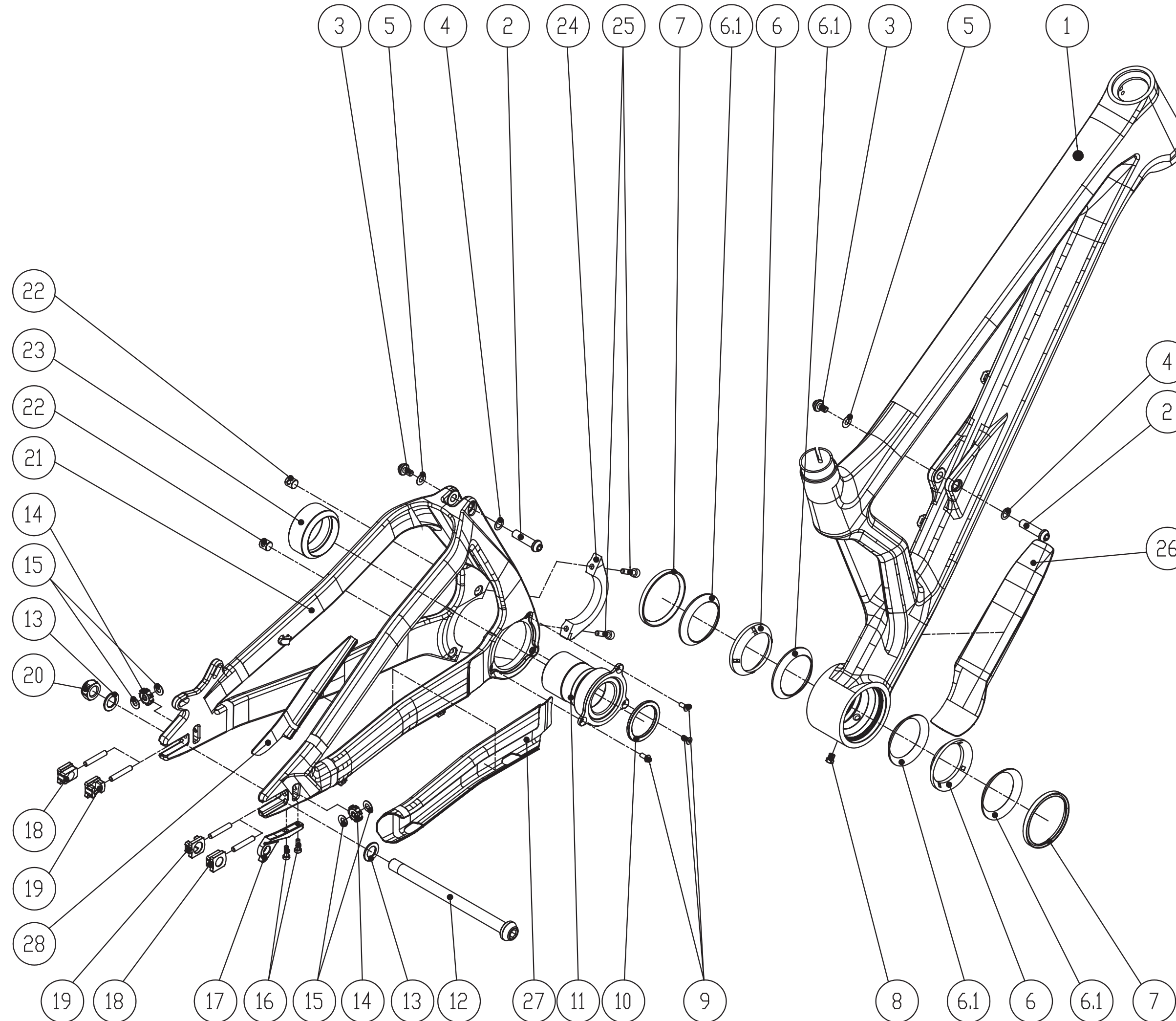
34,9 MM

### BREAKMOUNT STANDARD

IS 160 | MIN. ROTOR SIZE 180 MM

### BOTTOM BRACKET STANDARD

73 MM BSA



POS.	Part description	Quantity
1	FRONT TRIANGLE	1
2	SHOCK BOLT	2
3	SHOCK SCREW	2
4	WASHER	2
5	WASHER	2
6	BEARING	2
6,1	BEARING CAP	4
7	O-RING	2
8	GREASE NIPPLE	1
9	SCREW M4x10L	3
10	WASHER	1
11	BB-DRIVESIDE	1
12	REAR AXLE	1
13	WASHER	2
14	NUT	2
15	WASHER	4
16	SCREW DIN7984 M4x12L	2
17	HANGER	1
18	DROPOUT INLAY	2
19	DROPOUT INLAY	2
20	NUT	1
21	REAR TRIANGLE	1
22	NUT	2
23	BB-NONDRIVESIDE	1
24	CLAMP	1
25	SCREW	2
26	DT PROTECTOR	1
27	CS PROTECTOR	1
28	SS PROTECTOR	1